

BETHEL UNIVERSITY

8 NCAA PLAYOFF APPEARANCES • 5 MIAC TITLES • 2 NCAA WEST REGION CHAMPIONSHIPS

ROYALS FOOTBALL

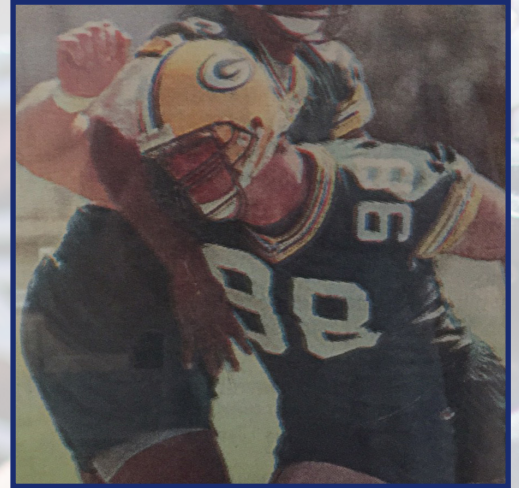
PERSPECTIVES ON BETHEL UNIVERSITY FOOTBALL

Matt Eller

Bethel DL/OL: 1989-92

Career: Business/Real Estate Entrepreneur

Eller came to Bethel intending to concentrate on basketball, but immediately got involved with the football program and went on to a college gridiron career that was eclipsed by his post-collegiate career where he went to training camp with both the Minnesota Vikings and Green Bay Packers, then spent six years playing in the Arena League for the Iowa Barnstormers and Arizona Rattlers. He now resides in Ames, Iowa and owns several businesses and properties.



Why did I choose Bethel?

After visiting several colleges, it was great to find a college that was proud to be a distinctly Christian institution. The summer before I came to Bethel, I lost someone close to me and it really caused me to think. I knew God, but I didn't really understand who He was. My journey to clarify who God was in my life began at Bethel. Teammates, classmates, professors and coaches were instrumental in my search for God. At Bethel I learned who God is, but through the coaching staff I began to learn what it means to be a man of God.

How did Bethel prepare me for my current career?

To be an ethical business person is a choice. There will be key decisions throughout your life that you can do the right thing in the midst of many people doing the wrong thing. Bethel walked me through some great questions and helped me have a course set that guided me towards the man I desired to be.

Highlights of our Business Program:

- Majors in Accounting and Finance, Business, Economics, and Economics and Finance
- Business emphases in Accounting, Business Analysis and Analytics, Finance, Human Resource Management, Innovation and Entrepreneurship, International Business and Marketing
- More than 90% of alumni report being prepared for their current job
- 75% of students study abroad
- 59% of alumni pass CPA exam (national average is 49%)
- 100+ internship contacts in the Twin Cities

Highlights of our academic programs are:

- 85% four-year graduation rate (national average is 40%)
- 7th nationally in study abroad programs
- Ranked in the Top 50 "Smartest Colleges in America." Bethel joined other elite academic institutions such as MIT, Princeton, Yale, Harvard, Stanford and Duke
- 12:1 student to faculty ratio
- Factoring in total cost of education and alumni earnings, Payscale.com ranked Bethel #2 among all private schools in Minnesota for the return on your investment
- 93% of business students are employed within three months of graduation (90% employed in their direct field of study)

BETHELROYALSFB.COM • BETHELROYALS.COM

FACEBOOK: FACEBOOK.COM/BETHELROYALS • TWITTER: @BETHELROYALSFB • INSTAGRAM: @BETHELROYALS